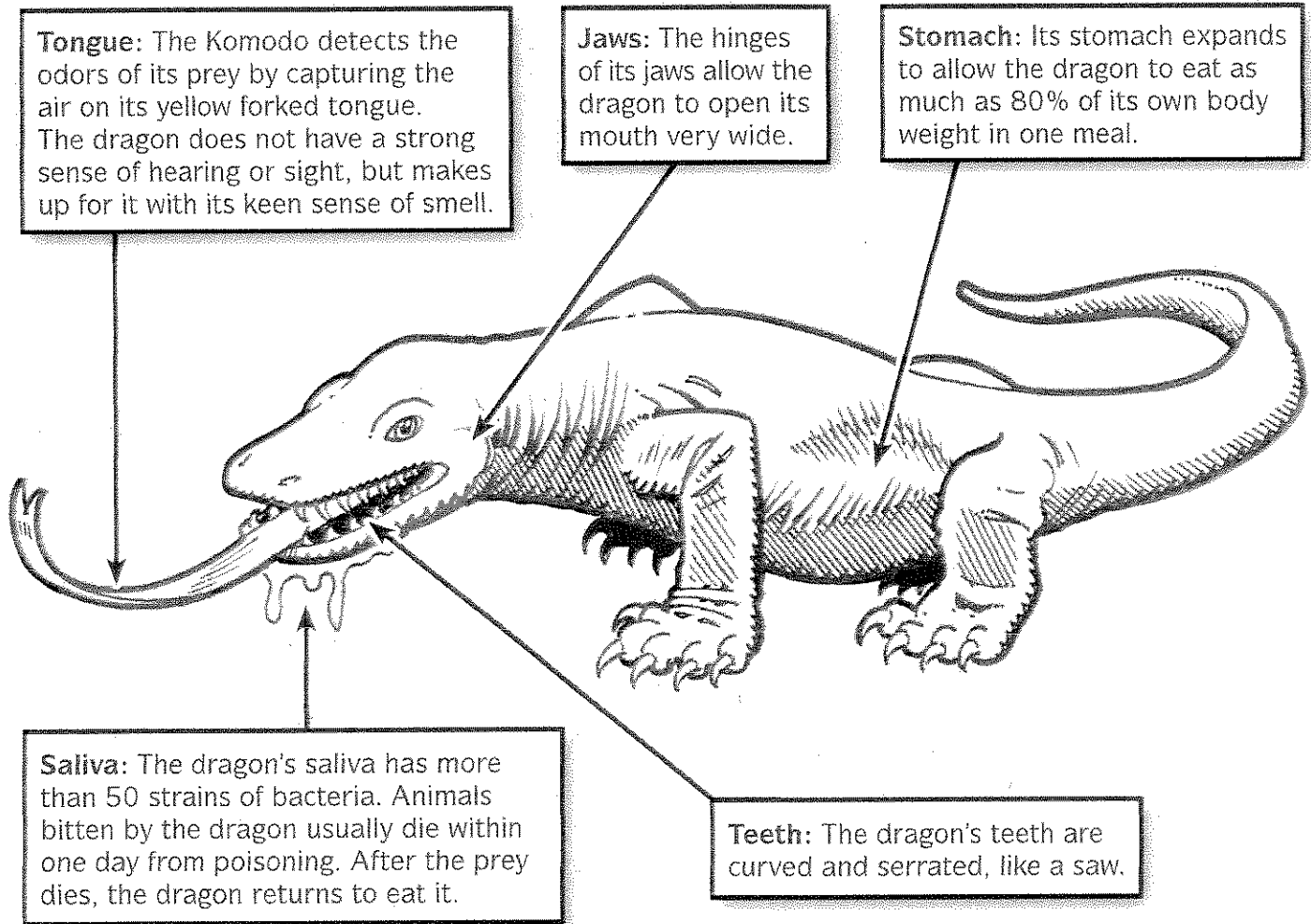


# Meet a Komodo Dragon

The Komodo dragon is the world's largest living lizard. On average, they are nine feet long and weigh 200 pounds. Study the diagram to learn about the adaptations that help the Komodo survive.



1. Circle a feature that helps Komodo dragons find prey.  
\_\_\_\_\_
2. Which feature allows a Komodo to swallow large objects?  
\_\_\_\_\_
3. How does a Komodo's saliva help it catch prey?  
\_\_\_\_\_  
\_\_\_\_\_
4. True or false: Komodo dragons use their sense of hearing to find food.  
\_\_\_\_\_
5. Which of the adaptations do you think is most important? Explain your answer.  
\_\_\_\_\_  
\_\_\_\_\_  
\_\_\_\_\_